



[www.epicindex.com](http://www.epicindex.com)

# Athlete Help File

**Combine Testing**

Home

EPIC Combine

EPIC Rating

News

FAQ

Contact US

Online Store

Talent  
Identification

Software

Programs

Equipment

Nutrition

Speakers

Apparel

View Shopping  
Cart

EPIC Order Form

Our Friends

boydepley.com

## TALENT IDENTIFICATION PROGRAM™

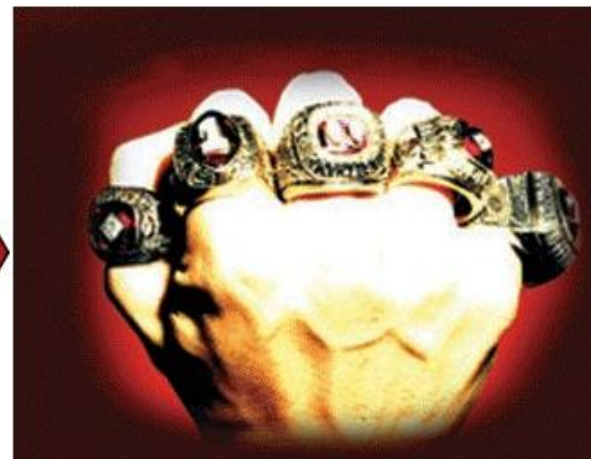


TEST  
AND  
EVALUATE

Step One - Testing  
Step Two - Evaluation  
Step Three - Setting Goals  
Step Four - Program



SET GOALS  
AND  
TRAIN



GET RESULTS

Click EPIC Combine

Test again to indicate if your program is working and if your athletes are improving.



# EVALUATE AND IMPROVE ATHLETIC PERFORMANCE

- Testing
- Evaluation
- Goals
- Program
- Equipment

Welcome to the EPIC Combine section. Please look around as much as you would like. If you have any questions or suggestions please contact us at [epley@epicindex.com](mailto:epley@epicindex.com).

- Home
- EPIC Combine
- EPIC Rating
- News
- FAQ
- Contact US

- Athletes**
- Coaches
- Directors



Click on Athletes

- Online Store
- Talent Identification
- Software
- Programs
- Equipment
- Nutrition
- Speakers
- Apparel
- View Shopping Cart
- EPIC Order Form
- Our Friends
- boydepley.com





# EVALUATE AND IMPROVE ATHLETIC PERFORMANCE

[Testing](#)[Evaluation](#)[Goals](#)[Program](#)[Equipment](#)[Home](#)[EPIC Combine](#)[EPIC Rating](#)[News](#)[FAQ](#)[Contact US](#)[Online Store](#)[Talent Identification](#)[Software](#)[Programs](#)[Equipment](#)[Nutrition](#)[Speakers](#)[Apparel](#)[View Shopping Cart](#)[EPIC Order Form](#)[Our Friends](#)[boydepley.com](#)

# EPIC ★ COMBINE ★ STANDARDIZED TESTING FOR ATHLETES

Athletes will register once to get their sport preference, age and other general information entered into the system then Login each time to register for combine testing in their area or to see their test results.

[ATHLETES](#)

Click here to register and access the full features of Combine Testing for Athletes.



Athletes click here



[Home](#)[EPIC Combine](#)[EPIC Rating](#)[News](#)[FAQ](#)[Contact US](#)[Online Store](#)[Talent Identification](#)[Software](#)[Programs](#)[Equipment](#)[Nutrition](#)[Speakers](#)[Apparel](#)[View Shopping Cart](#)[EPIC Order Form](#)[Our Friends](#)[boydeploy.com](#)

## Combine Testing FOR ATHLETES

[Register](#)[Login](#)[View Upcoming Combines](#)

The EPIC Combine is offered by Certified Combine Directors using standardized tests and equipment. Testing is done indoors on a basketball court. Testing can be done day or night with no wind. The surface is hard wood or Mondo type surface.

A  
o  
l  
S

Athletes  
Register one  
time.

C Index rating for each test and an overall Index rating based different than formulas for girls. Athletes will receive the EPIC  
e example of the EPIC Star Rating.



[Click here](#) to View EPIC Combine Test

For athletes that have tested at a comb  
EPIC Combine Rating. [Click here](#) to g

After that the athlete is a  
part of the EPIC Data  
Base and can Login

Athletes will view  
your Combine here  
by clicking View  
Upcoming Combines



# EVALUATE AND IMPROVE ATHLETIC PERFORMANCE

- Testing
- Evaluation
- Goals
- Program
- Equipment

- Home
- EPIC Combine
- EPIC Rating
- News
- FAQ
- Contact US

## EPIC Combine Athlete Registration

Please enter your Athlete's Information below to register for the EPIC Combine Index system.

Items with a star \* are required in order to submit this form.

### Athlete Country of Residence

U.S.A
  Canada

### Athlete Information

First name:*	Joe
Last name:*	Example
Street address:*	123 Anywhere
City:*	Colorado Springs
State:*	Colorado
Zip:*	80906
Country:*	U.S.A
Phone:*	719-333-3333
Gender:*	Male
Athlete Birth Date:*	6 / 2 / 1985
Sport :*	Football
Position :*	Tight End (TE)

Athletes Register and indicate their sport preference and their position in the sport. Coaches and Directors will be able to sort test data by position or sport after testing.

### Athlete Login Information

Username:*	boydepley@mac.com	(Enter Athletes Email address)
Password:*	*****	(Password must be 8 digits long)

Athletes then enter their e-mail address and create their own 8 digit password.



# EVALUATE AND IMPROVE ATHLETIC PERFORMANCE

Testing

Evaluation

Goals

Program

Equipment

Home

EPIC Combine

EPIC Rating

News

FAQ

Contact US

## Welcome to EPIC Combine Athlete Section

Please use the gray navigation buttons on the left for the EPIC Combine Athlete Section features.

### Athlete Combine Features

View Combines

View Test History

Send Test Scores

Change  
Password

Logout

### Online Store

Talent  
Identification

Software

Programs

Equipment

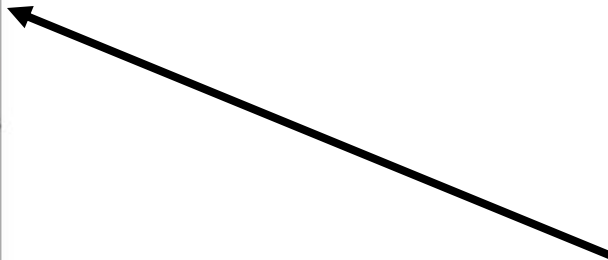
Nutrition

Speakers

Apparel

Athletes are now able to see items in the gray boxes. They can View upcoming Combines or View their past testing history. They can also send their Test Scores to four e-mail addresses of their choice.

Click View Combines





# EVALUATE AND IMPROVE ATHLETIC PERFORMANCE

Testing

Evaluation

Goals

Program

Equipment

Home

EPIC Combine

EPIC Rating

News

FAQ

Contact US

Athlete Combine Features

View Combines

View Test History

Send Test Scores

Change Password

Logout

Online Store

Talent Identification

Software

Programs

Equipment

Nutrition

Speakers

Apparel

## Upcoming Combine Testing for Athletes

City  State  Zip Code  Country

Athletes select a Combine by City, State, or Zip in their Country.





- Home
- EPIC Combine
- EPIC Rating
- News
- FAQ
- Contact US

## Upcoming Combine Testing for Athletes

City
  State
  Zip Code
  Country

### Search By State

State:\*

Athletes Click REGISTER NOW to sign up for a Combine near them.

### Athlete Combine Features

- View Combines
- View Test History
- Send Test Scores
- Change Password
- Logout
- Online Store

Your search for State **CO**.

**Jake Wurth (Director)**  
 A P I (Athletic Performance Institute)  
 1122 Colorado Ave  
 Colorado Springs, CO, 80904  
 U.S.A  
 719-304-1766  
Camp Date & Time 9/12/2008 : 8am  
Camp Price - \$10.00

**REGISTER NOW**

**Jake Wurth (Director)**  
 Athletic Performance Instatute  
 1885 Bob Johnson Dr.  
 Colorado Springs, CO, 80906  
 U.S.A  
 719-304-1766  
Camp Date & Time 9/12/2008 : 9am  
Camp Price - \$49.00

**REGISTER NOW**

**Boyd Epley (Director)**  
 Denver Courtyard Marriott  
 123 Anywhere  
 Denver, CO, 80509  
 U.S.A  
 719-352-3333  
Camp Date & Time 10/19/2008 : 1pm  
Camp Price - \$10.00

**REGISTER NOW**

**Boyd Epley (Director)**  
 Example Combine Testing  
 123 Anywhere  
 Your City, CO, 80906  
 U.S.A  
 333-333-3333  
Camp Date & Time 6/1/2009 : 10am  
Camp Price - \$50.00

**REGISTER NOW**

- Talent Identification
- Software
- Programs
- Equipment
- Nutrition
- Speakers
- Apparel
- View Shopping Cart



# EVALUATE AND IMPROVE ATHLETIC PERFORMANCE

[Testing](#)[Evaluation](#)[Goals](#)[Program](#)[Equipment](#)[Home](#)[EPIC Combine](#)[EPIC Rating](#)[News](#)[FAQ](#)[Contact US](#)

## EPIC Combine Registration

Please provide the following information. Items with a star \* are required in order to submit this form.

We use SSL technology to ensure secure transmission of your data.

### Country of Residence

 U.S.A Canada International

Athletes will see this page then enter their information for the Combine.

### Athlete Combine Features

[View Combines](#)[View Test History](#)[Send Test Scores](#)[Change Password](#)[Logout](#)

### Online Store

[Talent Identification](#)[Software](#)[Programs](#)[Equipment](#)[Nutrition](#)[Speakers](#)[Apparel](#)[View Shopping](#)

Send Test Scores  
Change Password  
Logout

Gender:*	Male
Street address:*	3418 Mead St
City:*	Denver
State:*	Colorado
Zip:*	80618
Country:*	U.S.A
Phone:*	303-681-
Fax:	
Email:*	jakewurth

Athletes personal information is displayed at the top of the page.

### Combine Information

Combine Director Name :*	Boyd Epley
Place Name:*	Example Combine Testing
Address:*	123 Anywhere
City, State, Zip:*	Your City, CO, 80906
Country:*	U.S.A
Phone:*	333-333-3333
Email:*	boydepley@mac.com
Camp Date & Time:*	6/1/200910am
Camp Price:*	\$50.00

The Combine they have chosen is listed here along with the Fee.

### Billing

Amount:*	50
Credit Card Type:*	Select the Card Type
Card number:*	
Expiration date:*	MM / YYYY
Name on card:*	
Billing Address:*	
Billing Zip Code:*	

Athletes enter their credit card information here and click Submit Registration.

Submit Registration Clear

Talent Identification  
Software  
Programs  
Equipment  
Nutrition  
Speakers  
Apparel  
View Shopping Cart  
EPIC Order Form  
Our Friends  
boydepley.com

  
**EPIC Athletic Performance Inc.**  
P.O Box 61689  
Colorado Springs,  
CO 80960  
www.epicindex.com  
epley@epicindex.com



# EVALUATE AND IMPROVE ATHLETIC PERFORMANCE

[Testing](#)[Evaluation](#)[Goals](#)[Program](#)[Equipment](#)[Home](#)[EPIC Combine](#)[EPIC Rating](#)[News](#)[FAQ](#)[Contact US](#)[Online Store](#)[Talent Identification](#)[Software](#)[Programs](#)[Equipment](#)[Nutrition](#)[Speakers](#)[Apparel](#)[View Shopping Cart](#)[EPIC Order Form](#)[Our Friends](#)[boydepley.com](#)

## EPIC Combine Registration

Please print and save this page as your receipt.

Thank you for registering for the EPIC Combine.

### Personal Details

Jakey  
1021 Anywhere Street  
Colorado Springs, CA 80906  
U.S.A  
719-098-0987  
suziereynolds2000@yahoo.com

### Registration Details

Combine Camp Fees	\$50.00
-------------------	---------

### Testing Code

Please give this code **A5A4J** to your director or coach for testing.

### Combine Details

Combine Director Name :*	Boyd Epley
Place Name:*	Example Combine Testing
Address:*	123 Anywhere
City, State, Zip:*	Your City, CO, 80906
Country:*	U.S.A
Phone:*	333-333-3333
Email:*	boydepley@mac.com
Camp Date & Time:*	6/1/200910am

The Athlete receives confirmation and a code that is used by the Director or Coach to enter the test data into the system.

From: epley@epicindex.com

Subject: **Registration Confirmation and Receipt for EPIC Combine Camp Registration**

Date: August 25, 2008 12:41:33 PM MDT

To: Boyd Epley

Registration Confirmation and Receipt for EPIC Combine Camp Registration.

**Name** - Jakey

**Address 1** - 1021 Anywhere Street

**City** - Your City

**State, Zip** - CO, 80906

**Country** - U.S.A

**Phone** - 333-333-3333

**Email** - boydepley@mac.com

**Cost** - \$50.00

**Date Paid** - 8/25/2008 1:41:31 PM

Below is your EPIC Combine Camp Information:

Boyd Epley

Example Combine Testing

123 Anywhere

Your City, CO, 80906, U.S.A

Phone : 333-333-3333

Email: boydepley@mac.com

Camp Date & Time : 6/1/2009, 10am

Camp Price: \$50.00

Please give this code & A5A4J to your director or coach for testing.

Sincerely,

The Director or Coach also receives a copy showing the athlete has paid and has a code to be tested at the upcoming Combine.



# EVALUATE AND IMPROVE ATHLETIC PERFORMANCE

- Testing
- Evaluation
- Goals
- Program
- Equipment

- Home
- EPIC Combine
- EPIC Rating
- News
- FAQ
- Contact US

## Testing Card Options

With Athlete's Name
  Blank

To prepare for testing the Coach or Director prints out a Testing Card which the athlete carries from test station to test station. If the athlete has registered properly a card with the athlete name will be printed otherwise a blank card is used to collect the test data and the athlete is registered after the testing is completed..

### Combine Features

- Camps
- Combines
- Print Test Card
- Add Data
- Athlete Scores in Excel
- Individual Athlete Scores
- Templates
- Talent Identification
- Software
- Programs
- Equipment
- Nutrition
- Apparel
- View Shopping Cart



### Test Data Collection Card

Athlete #	17		
Name	Jakey Jakey		
Gender	Male		
Director Name	Boyd Epley		
Test Date			
Body Weight			
Height			
% Body Fat			

**Competition Tests**

Vertical Jump	Reach	inches	Jump	inches
Pro Agility Run		seconds		
Ten Yard Dash		seconds		
40 yard dash		seconds		

**Strength Tests**

Squat:	Poundage Used		Reps Completed	
Incline press:	Poundage Used		Reps Completed	
Bench press:	Poundage Used		Reps Completed	
Hang Clean:	Poundage Used		Reps Completed	

The image shows two versions of the EPIC Combine testing card. The left card is filled with data for an athlete named Jakey Jakey, including name, gender, director name, and test results for vertical jump, agility, and strength. The right card is a blank version of the same form, intended for use when the athlete's name is not yet registered.



# EVALUATE AND IMPROVE ATHLETIC PERFORMANCE

- Testing
- Evaluation
- Goals
- Program
- Equipment

- Home
- EPIC Combine
- EPIC Rating
- News
- FAQ
- Contact US

## Add Test Data

Confirmation #:<sup>\*</sup>

Submit

(Please Click the Submit Button rather than clicking enter on the Keyboard)



After testing is completed the Director or Coach enters the code along with the athlete's test data. The code can only be used once.

### Combine Features

- Camps
- Combines
- Print Test Card
- Add Data
- Athlete Scores in Excel
- Individual Athlete Scores
- Templates
- Talent Identification
- Software
- Programs
- Equipment
- Nutrition
- Apparel
- View Shopping Cart



# EVALUATE AND IMPROVE ATHLETIC PERFORMANCE

- Testing
- Evaluation
- Goals
- Program
- Equipment

- Home
- EPIC Combine
- EPIC Rating
- News
- FAQ
- Contact US

- Combine Features
- Camps
- Combines
- Print Test Card
- Add Data
- Athlete Scores in Excel
- Individual Athlete Scores
- Templates
- Talent Identification
- Software
- Programs
- Equipment
- Nutrition
- Apparel
- View Shopping Cart

## Add Test Data

**Jakey Jakey**  
 1021 Anywhere Street  
 Colorado Springs, CA, 80906  
 U.S.A  
 719-098-0987  
 suziereynolds2000@yahoo.com

### Test Information

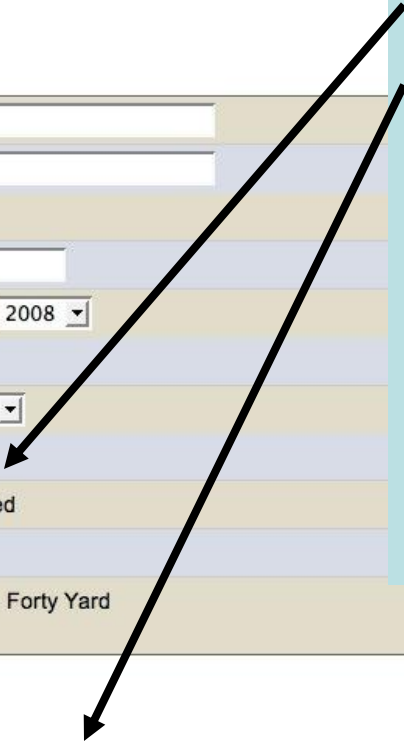
Sport:*	Aquatics		
Position:*	Diving		
Gender:*	Male		
Director Name:*	Boyd Epley		
Test Date:*	08	/	20
		/	2008
Body Weight:*	190		
Height:*	5		10
% Body Fat			
Vertical Jump:*	25.5	inches jumped	
Pro Agility Run:*	4.12	Seconds	
Yard Dash:*	<input checked="" type="radio"/> Ten Yard <input type="radio"/> Forty Yard		
	1.71	Seconds	

### Strength Tests

Squat:	Poundage Used	365	Reps Completed	5
Incline press:	Poundage Used		Reps Completed	0
Bench press:	Poundage Used	225	Reps Completed	18
Hang Clean:	Poundage Used	240	Reps Completed	5

[Add Test Data](#)   [Clear](#)

Testing can include Performance Tests, Strength Tests or a combination of the two however, the index points that make up the EPIC Rating are kept separate from the Strength Index.





# EVALUATE AND IMPROVE ATHLETIC PERFORMANCE

Testing

Evaluation

Goals

Program

Equipment

Home

EPIC Combine

EPIC Rating

News

FAQ

Contact US

## Personal Information

**Jakey Jakey**  
1021 Anywhere Street  
Colorado Springs, CA, 80906  
U.S.A  
719-098-0987  
suziereynolds2000@yahoo.com

## Options to see your test data

- Athlete Profile - for each test date
- View Athlete Score in Excel - Print in landscape format and Fit to One Page in Page Set up

## Athlete Combine Features

View Combines

View Test History

Send Test Scores

Change Password

Logout

## Online Store

Talent Identification

Software

Programs

Equipment

Nutrition

Speakers

Apparel

View Shopping Cart

Once the test scores are processed the athlete can Login to View Their Test History in an Athlete Profile or in Excel

- Home
- EPIC Combine
- EPIC Rating
- News
- FAQ
- Contact US

## Personal Information

**Jakey Jakey**  
 1021 Anywhere Street  
 Colorado Springs, CA, 80906  
 U.S.A  
 719-098-0987  
 suziereynolds2000@yahoo.com

### Options to see your test data

- Athlete Profile - for each test date
- View Athlete Score in Excel - Print in landscape format and Fit to One Page in Page Set up

Test Date:\*

- Athlete Combine Features**
- View Combines
  - View Test History
  - Send Test Scores
  - Change Password
  - Logout

**Body Weight :** 190  
**Height :** 5' 10"  
**Sport :** Aquatics  
**Position :** Diving  
**Confirmation Code :** a5a4j  
**Gender :** Male  
**Body Fat :**

The Athlete Profile shows the EPIC Rating for this test period.

		Index Points
Vertical Jump	25.5	347.93
Pro Agility Run	4.12	492
Ten Yard Dash	1.71	377
Forty Yard Dash		
<b>EPIC Index Rating</b>		<b>1216.93</b>

### Strength Tests

	Poundage	Reps Completed	RM	Index Points
Squat	365	5	420	465
Incline Press		0		
Bench Press	225	18	346	566
Hang Clean	240	5	276	442
<b>Strength Index</b>				

- Online Store**
- Talent Identification
  - Software
  - Programs
  - Equipment
  - Nutrition
  - Speakers
  - Apparel
  - View Shopping Cart
  - EPIC Order Form



# EVALUATE AND IMPROVE ATHLETIC PERFORMANCE

Testing

Evaluation

Goals

Program

Equipment

Home

EPIC Combine

EPIC Rating

News

FAQ

Contact US

Athlete Combine  
Features

View Combines

View Test History

Send Test Scores

Change  
Password

Logout

Online Store

Talent  
Identification

Software

Programs

Equipment

## Send Test Scores

Test Date:\*

08/20/2008

Body Weight : 190

Height : 5' 10"

Sport : Aquatics

Position : Diving

Confirmation Code : a5a4j

Gender : Male

Vertical Jump	25.5	
Pro Agility Run	4.12	
Ten Yard Dash	1.71	
Forty Yard Dash		
EPIC Index Rating		1216.93

Enter the e-mail address of anyone that you would like to receive your EPIC Index Rating for this test date. Your friends, your parents, a college or University, etc.

Email 1	<input type="text"/>
Email 2	<input type="text"/>
Email 3	<input type="text"/>
Email 4	<input type="text"/>

Send Email

Clear

The Athlete can then send a copy of the EPIC Rating for this test period to four addresses by entering the e-mail address and clicking Send Email.